

AM5 Series Protection Relay

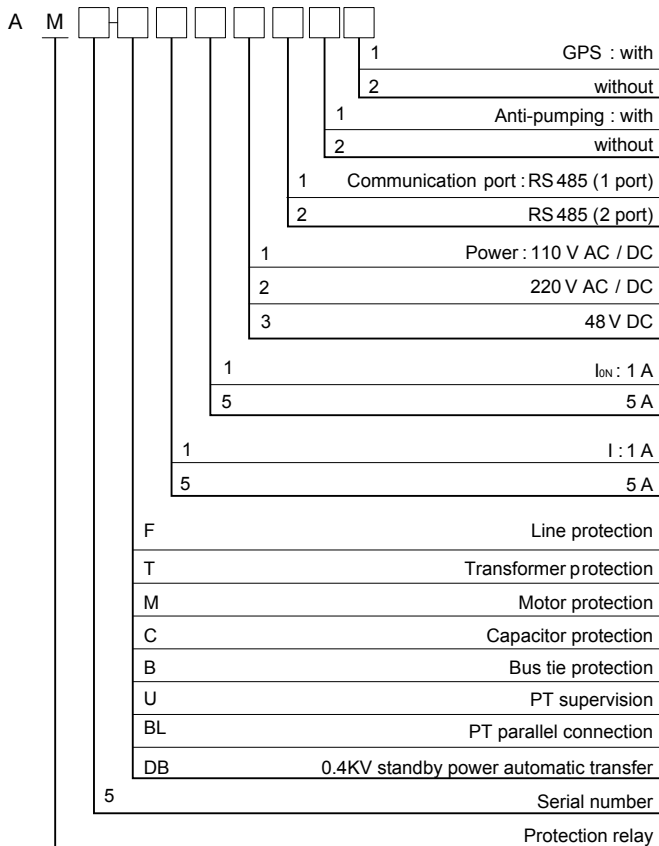


Functions

Protection Functions	AM5-								
	F	T	M	C	B	U1	U2	DB	
Directional overcurrent (with voltage dependant, 3 stages)	■								
Overcurrent (with compound voltage dependant, 3 stages)		■							
Overcurrent (motor start,motor run, 2 stages)			■						
Overcurrent (2 stages)				■	■				
Overcurrent IDMT	■	■	■	■	■				
Earth fault	■	■	■	■					
Earth fault IDMT (I01)	■	■							
Earth fault IDMT (I02)	■	■							
Overload (alarm)	■	■	■						
Overload (trip)	■	■	■						
Trip and close circuit supervision (alarm)	■	■	■		■				
Undervoltage (trip)			■						
Undervoltage (alarm)						■	■		
Loss of voltage (trip)	■								
Loss of voltage (alarm)	■								
PT disconnection	■	■	■	■	■	■	■		
Three phase auto-reclose	■								
Under frequency	■								
Over frequency	■								
Post-accelerated overcurrent	■				■				
Overvoltage (alarm)	■					■	■		
Loss of voltage (trip)	■			■					
Blocking rotor			■						
Capacitor undervoltage				■					
Unbalance voltage				■					
Unbalance current				■					
Residual overvoltage (trip)	■			■					
Residual overvoltage (alarm)	■		■			■			
Non-electricity		■	■	■					
Starting time-out			■						
Directional power	■								
Thermal overload (trip/alarm)			■						
Negative sequence overcurrent (2 stages/IDMT)			■						
Overvoltage average			■						
Overcurrent average			■						
Incorrect phase sequence			■						
Bus tie and standby power automatic switch						■			
0.4kV standby power automatic switch								■	
FC block	■	■	■	■	■				
Rear Ports		F	T	M	C	B	U1	U2	DB
RS485 (2 ports)						■			

Note: ■standard □optional

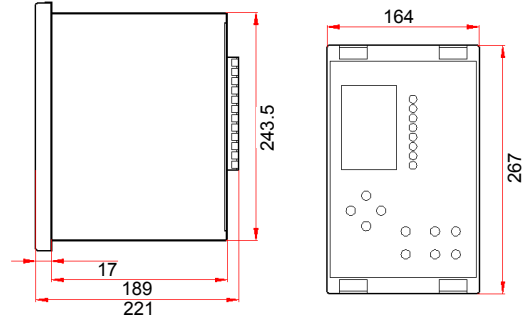
Model Description



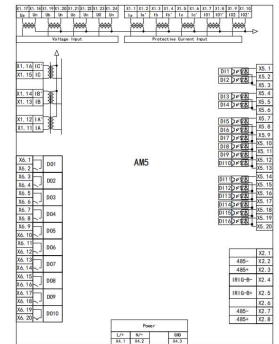
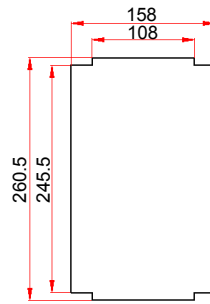
Protocols	AM5-							
	F	T	M	C	B	U1	U2	DB
Modbus serial				■				
IEC 60870-5-103				■				
IEC 60870-5-101				■				
Logs and Records	F	T	M	C	B	U1	U2	DB
Tripping context records				■				
Sequence of event records				■				
Measurement	F	T	M	C	B	U1	U2	DB
Electric parameter		U, I, P, Q, PF, F, Ep, Eq, Es						
Input current	8	8	8	8	8	0	0	8
Input voltage	4	4	4	4	4	4	8	4
Monitoring Functions	F	T	M	C	B	U1	U2	DB
Anti-pumping circuit				Optional				
Remote control				■				
Others	F	T	M	C	B	U1	U2	DB
GPS				■				

Note: ■ standard □ optional

Wiring



■ Dimensions



■ Cut-out Dimensions

■ Wiring

Operation Process

